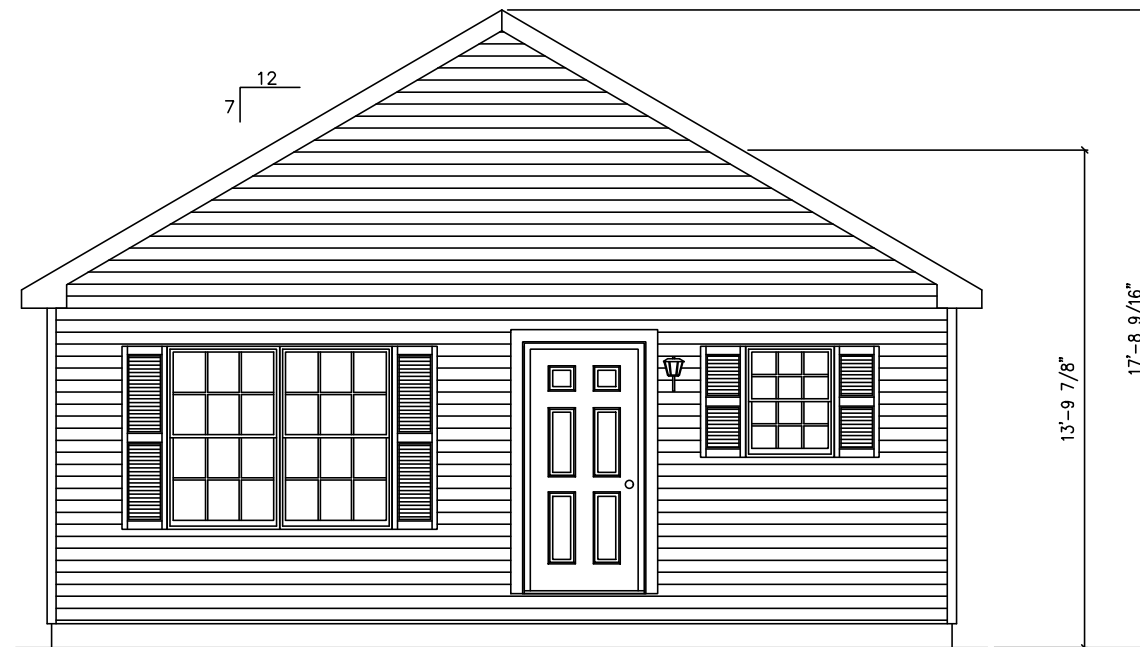


ICE SHIELD ON EAVES (2 ROWS)
 INSTALL 1X3 SHADOW BOARD ON FASCIA W/STEPPED ALUMINUM FASCIA



CEILING
 8'-0"
 FLOOR

CEILING
 FLOOR

| DATE: | DRAWN BY: | STATUS: |
|------------|-----------|-----------|
| 11/21/23 | JWY | CONFO |
| 2/13/24 | GPO | REV CONFO |
| 2/27/2024 | COB | REV CONFO |
| 10/07/2024 | MDC | REV CONFO |

2532-CBS RANCH
 FRONT ELEVATION




Custom Building Systems LLC
 200 Custom Ave.
 Middleburg, PA 17842
 (888) 553-1414
 www.custombuildingsystems.net

| BUILDER | CUSTOMER |
|---------------------|-------------------------|
| HALLMARK HOMES CORP | SMALL HOME |
| CITY TOPSHAM | STATE ME |
| COUNTY SAGADAHOC | |
| WIND SPEED 115 MPH | VULT SNOW LOAD 50 |
| ORDER NO. 115112 | SERIAL NO. P115112(110) |
| | SQ. FT. 800 |

MIKEC 10/7/2024 11:32:50 AM

CEILING

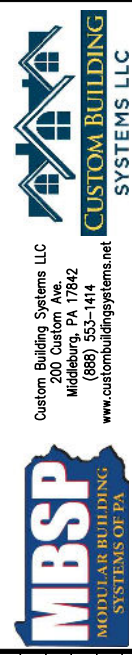
FLOOR



CEILING

FLOOR

2532-CBS RANCH
REAR ELEVATION



Custom Building Systems LLC
200 Custom Ave.
Middleburg, PA 17842
(888) 553-1414
www.custombuildingsystems.net

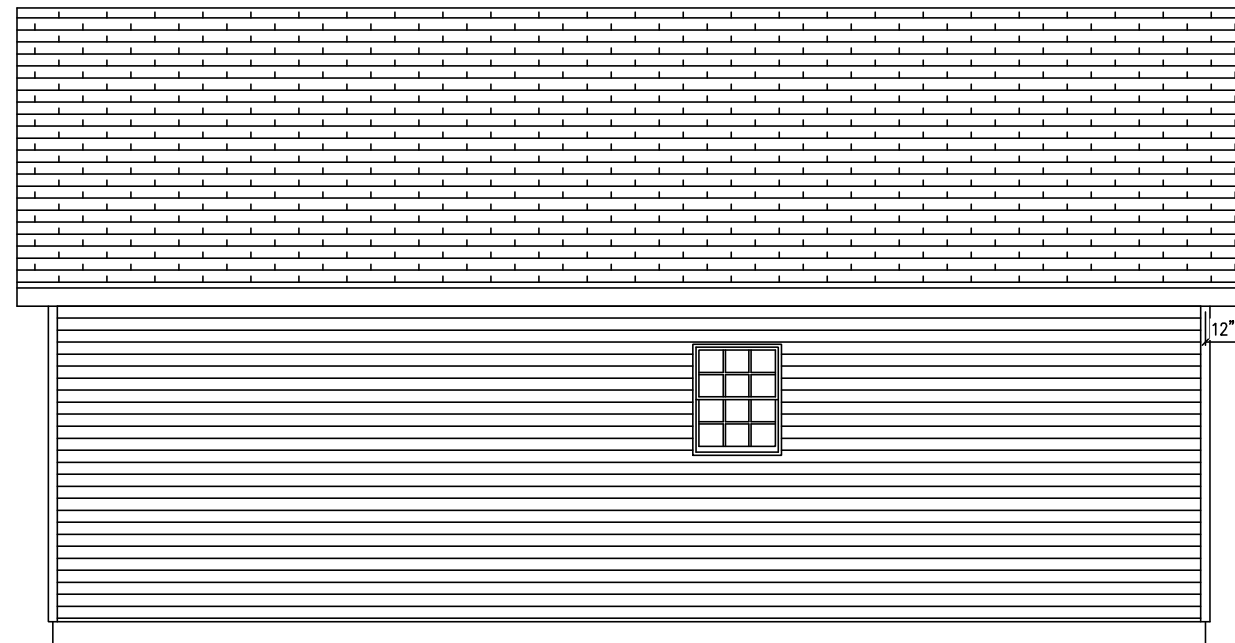
| | | | |
|------------|---------------------|------------|--------------|
| BUILDER | HALLMARK HOMES CORP | CUSTOMER | SMALL HOME |
| CITY | TOPSHAM | COUNTY | SAGADAHOC |
| STATE | ME | SNOW LOAD | 50 |
| WIND SPEED | 115 MPH | VULT | 800 |
| ORDER NO. | 115112 | SERIAL NO. | FILE NO. |
| | | | P115112(110) |

MIKEC 10/7/2024 11:32:50 AM

ACTUAL HOUSE MAY VARY FROM ELEVATION-ACCESS TO GRADE ON-SITE BY OTHERS

CEILING

FLOOR



CEILING

FLOOR

MIKEC 10/7/2024 11:32:50 AM

ACTUAL HOUSE MAY VARY FROM ELEVATION-ACCESS TO GRADE ON-SITE BY OTHERS

| | | | |
|------------|---------------------|------------|--------------|
| BUILDER | HALLMARK HOMES CORP | CUSTOMER | SMALL HOME |
| CITY | TOPSHAM | COUNTY | SAGADAHOC |
| WIND SPEED | 115 MPH | VULT | SNOW LOAD |
| ORDER NO. | 115112 | SERIAL NO. | 50 |
| | | FILE NO. | P115112(110) |
| | | STATE | ME |
| | | SQ. FT. | 800 |

2532-CBS RANCH
LEFT ELEVATION

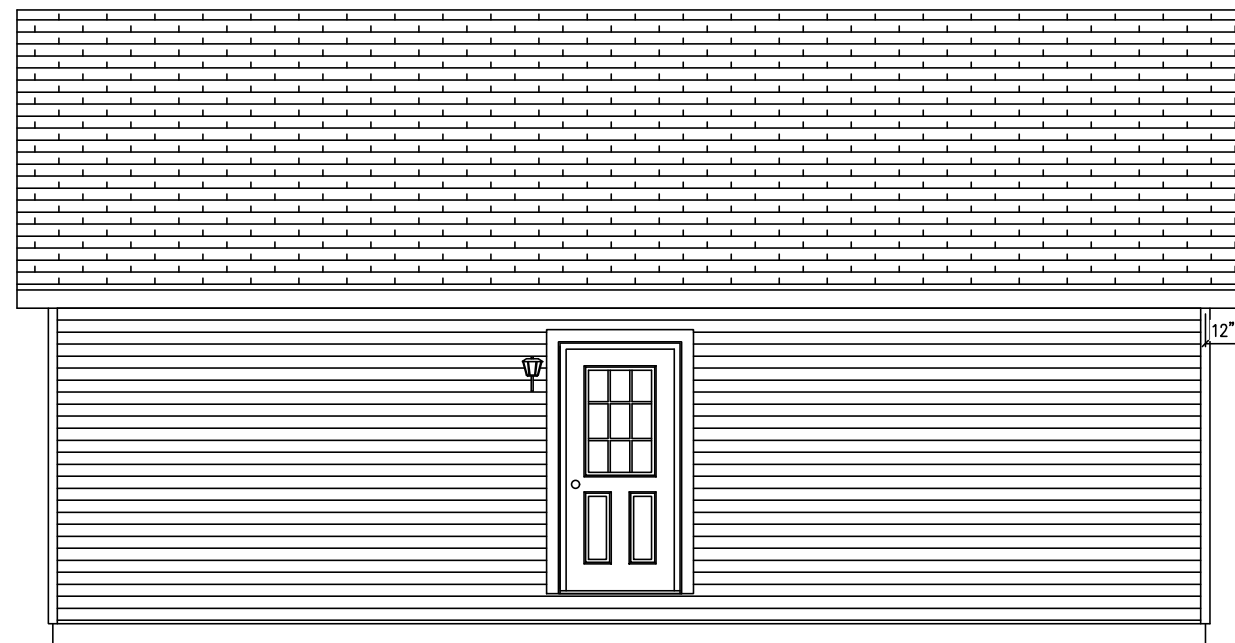
Custom Building Systems LLC
200 Custom Ave.
Middleburg, PA 17842
(888) 553-1414
www.custombuildingsystems.net

CUSTOM BUILDING SYSTEMS LLC

| | | | |
|-----------|----------|---------|-------|
| DATE: | 11/21/23 | STATUS: | CONFO |
| DRAWN BY: | JWY | REV | CONFO |
| | GPO | REV | CONFO |
| | COB | REV | CONFO |
| | MDC | REV | CONFO |
| | | | |
| | | | |
| | | | |

CEILING

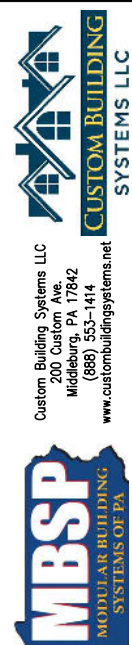
FLOOR



CEILING

FLOOR

2532-CBS RANCH
RIGHT ELEVATION



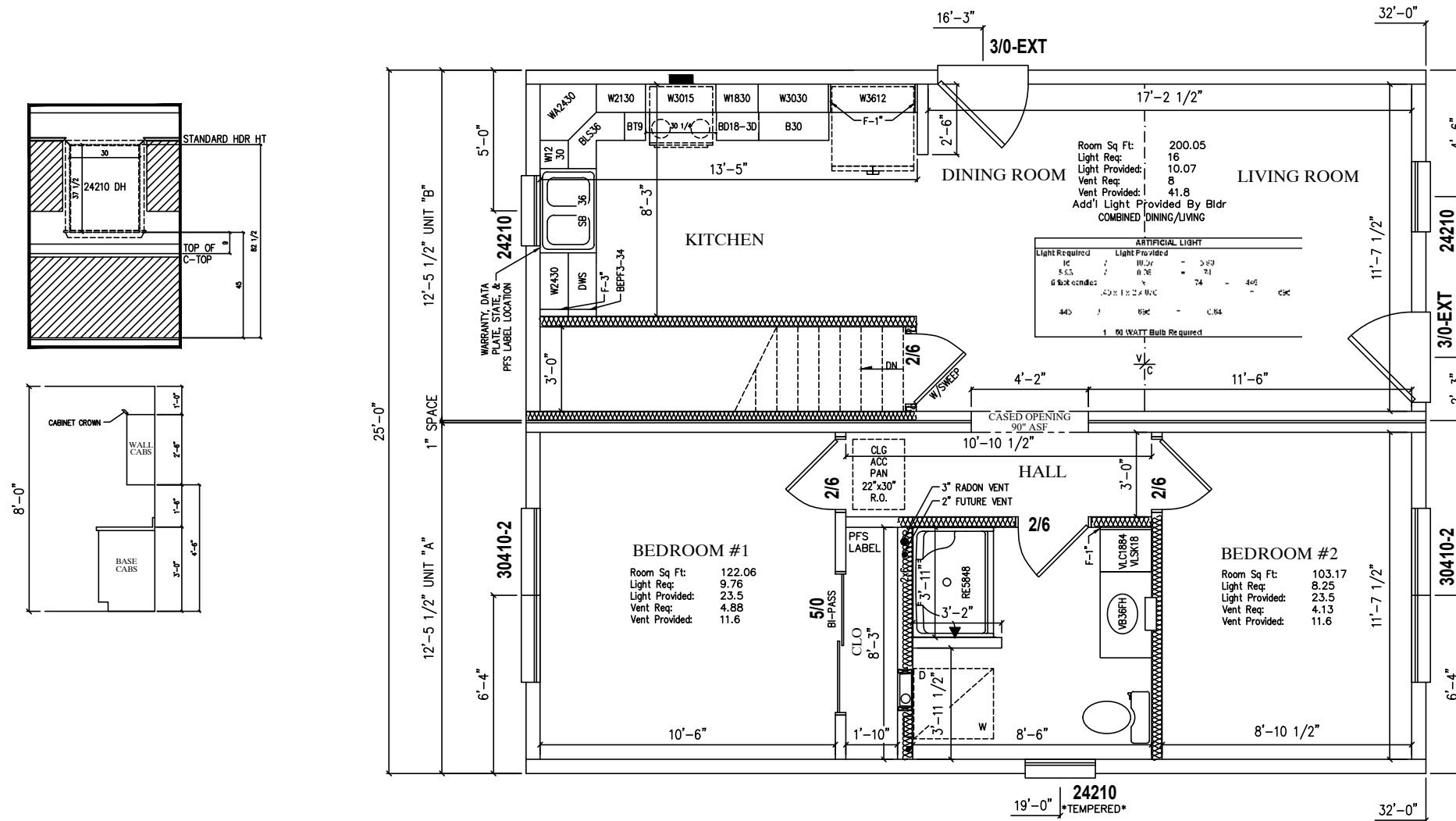
Custom Building Systems LLC
200 Custom Ave.
Middleburg, PA 17842
(888) 553-1414
www.custombuildingsystems.net

| | | | |
|------------|---------------------|------------|--------------|
| BUILDER | HALLMARK HOMES CORP | CUSTOMER | SMALL HOME |
| CITY | TOPSHAM | COUNTY | SAGADAHOC |
| STATE | ME | SNOW LOAD | 50 |
| WIND SPEED | 115 MPH | VULT | 800 |
| ORDER NO. | 115112 | SERIAL NO. | P115112(110) |

| | | | |
|-----------|----------|-----------|-------|
| DATE: | 11/21/23 | STATUS: | CONFO |
| DRAWN BY: | JWY | REV CONFO | |
| | GPO | REV CONFO | |
| | COB | REV CONFO | |
| | MDC | REV CONFO | |

MIKEC 10/7/2024 11:32:50 AM

ACTUAL HOUSE MAY VARY FROM ELEVATION-ACCESS TO GRADE ON-SITE BY OTHERS



FRONT

- CODES:
 2015 INTERNATIONAL RESIDENTIAL CODE WITH AMENDMENTS
 2015 UNIFORM PLUMBING CODE WITH EXCEPTIONS
 2017 NFPA 70, NATIONAL ELECTRICAL CODE WITH EXCEPTIONS
 2011 NFPA 31, STD. FOR THE INSTALLATION OF OIL BURNING EQUIPMENT
 2012 NFPA 54, NATIONAL FUEL GAS CODE
 2013 NFPA 211, STD. FOR CHIMNEYS, FIREPLACES, VENTS & SOLID FUEL BURNING APPLIANCES
 2011 STATE OF MAINE OIL AND SOLID FUEL BOARD LAW & RULES

MIKEC 10/7/2024 11:32:50 AM

- NOTES: 1. *- DENOTES ADDITIONAL COLUMN IN BASEMENT
 2. 2X6 EXTERIOR WALLS 16" O.C.
 3. 2X4 MARRIAGE WALLS 16" O.C.
 4. ROOF RAFTERS 16" O.C.

5. 8'-0" CLG.
 6. STAIRS TO BE 8 1/4" RISERS AND 9" TREADS.
 7.
 8.

9.
 10.
 11.
 12.

| | | | |
|------------|---------------------|-----------|------------|
| BUILDER | HALLMARK HOMES CORP | CUSTOMER | SMALL HOME |
| CITY | TOPSHAM | COUNTY | SAGADAHOC |
| WIND SPEED | 115 MPH | SNOW LOAD | 50 |
| ORDER NO. | 115112 | STATE | ME |
| SERIAL NO. | | SQ. FT. | 800 |
| FILE NO. | P115112(110) | | |

2532-CBS RANCH
 1st STORY FLOOR PLAN

Custom Building Systems LLC
 200 Custom Ave.
 Middleburg, PA 17842
 (888) 553-1414
 www.custombuildingsystems.net

| | | | |
|-----------|----------|-----------|-------|
| DATE: | 11/21/23 | STATUS: | CONFO |
| DRAWN BY: | JWY | REV CONFO | |
| | GPO | REV CONFO | |
| | COB | REV CONFO | |
| | MDC | REV CONFO | |