
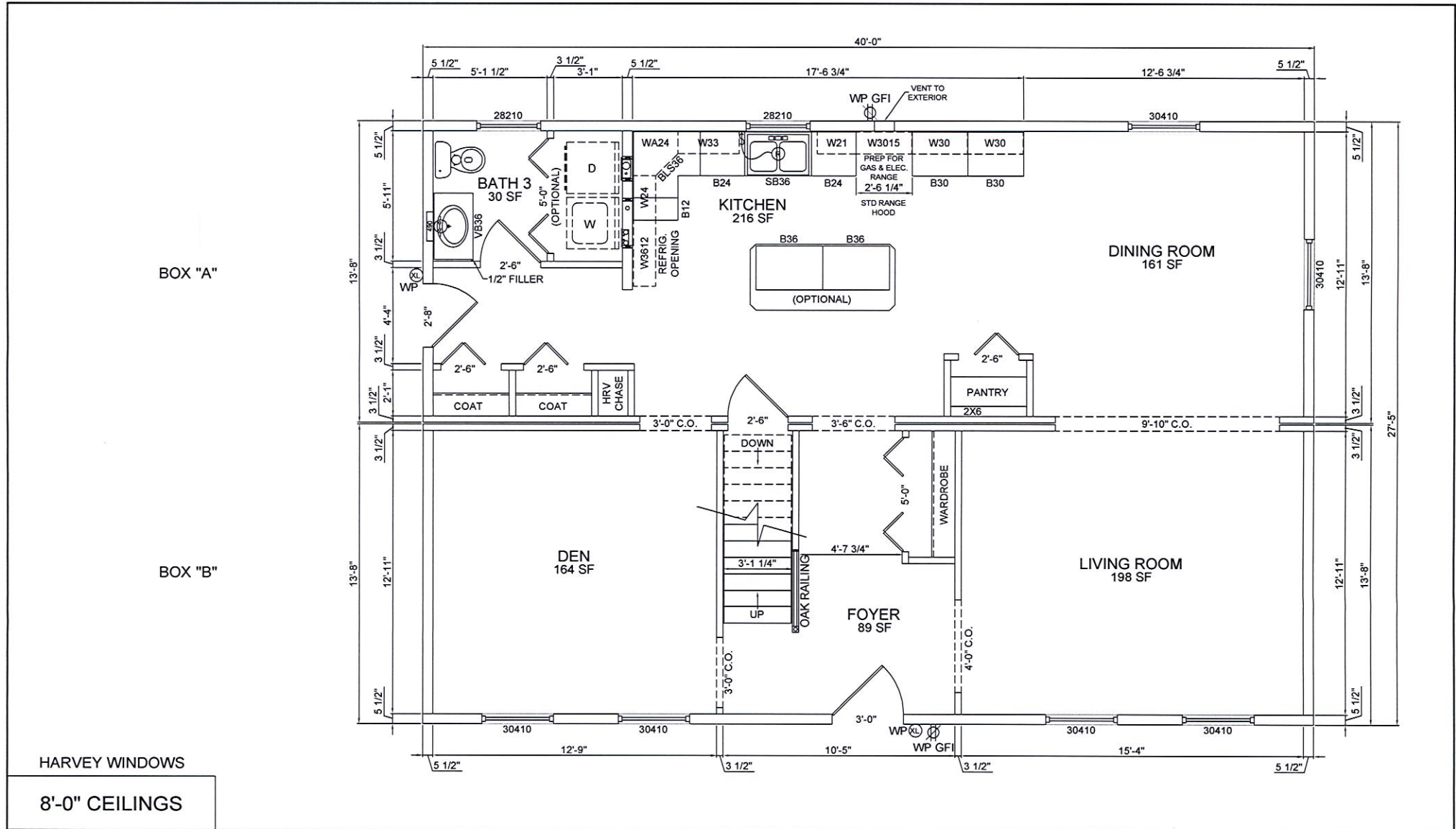


FRONT ELEVATION

NOTE:
 - ELEVATIONS ARE FOR GRAPHIC REPRESENTATION ONLY. REFER TO WORK ORDER FORM FOR DETAILED INFORMATION.
 - EXTERIOR STEPS, RAILINGS & LANDINGS ONSITE BY OTHER.

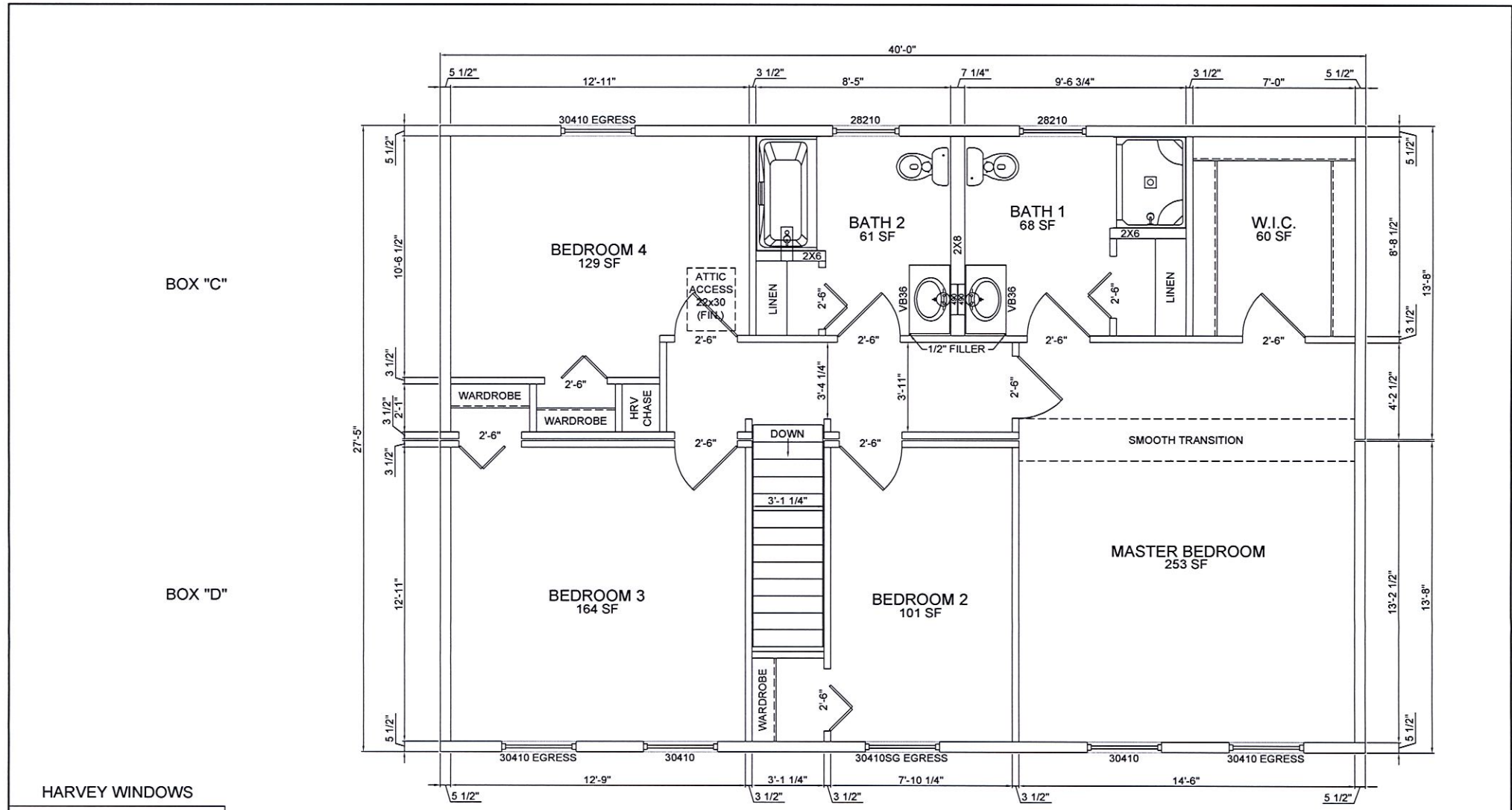
JOB NAME	DRAWN BY	HOUSE TYPE Concord Colonial FILE NAME: SERIAL #:	FRONT ELEVATION SHEET # P2 SCALE: 1/4" = 1'-0" DWN BY: KBS DATE:	REVISIONS <table border="1"> <tr><td> </td></tr> <tr><td> </td></tr> <tr><td> </td></tr> <tr><td> </td></tr> </table>						KBS BUILDERS, INC. 300 PARK STREET, SOUTH PARIS, ME 04281 PHONE: 207-739-2400 FAX: 207-739-2223



HARVEY WINDOWS

8'-0" CEILINGS

<p>JOB NAME</p>	<p>BUILDER</p>	<p>HOUSE TYPE Concord Colonial</p> <p>FILE NAME: SERIAL #:</p>	<p>1st FLOOR PLAN</p> <p>SHEET # P3 SCALE: 1/4" = 1'-0" DWN BY: KBS DATE:</p>	<p>REVISIONS</p>		<p>KBS BUILDERS, INC. 300 PARK STREET, SOUTH PARIS, ME 04281 PHONE: 207-739-2400 FAX: 207-739-2223</p>
-----------------	----------------	---	--	------------------	--	---



HARVEY WINDOWS

8'-0" CEILINGS

HOUSE TYPE
Concord Colonial

FILE NAME:
SERIAL #:

2nd FLOOR PLAN

SHEET # P4
SCALE: 1/4" = 1'-0"
DWN BY: KBS
DATE:

REVISIONS



KBS BUILDERS, INC.
300 PARK STREET, SOUTH PARIS, ME 04281
PHONE: 207-739-2400 FAX: 207-739-2223